



# 3 BEDROOM TYPE B ACCESSIBLE HOME

864 SQ.FT.

## 1380 HEMLOCK RD. (A)

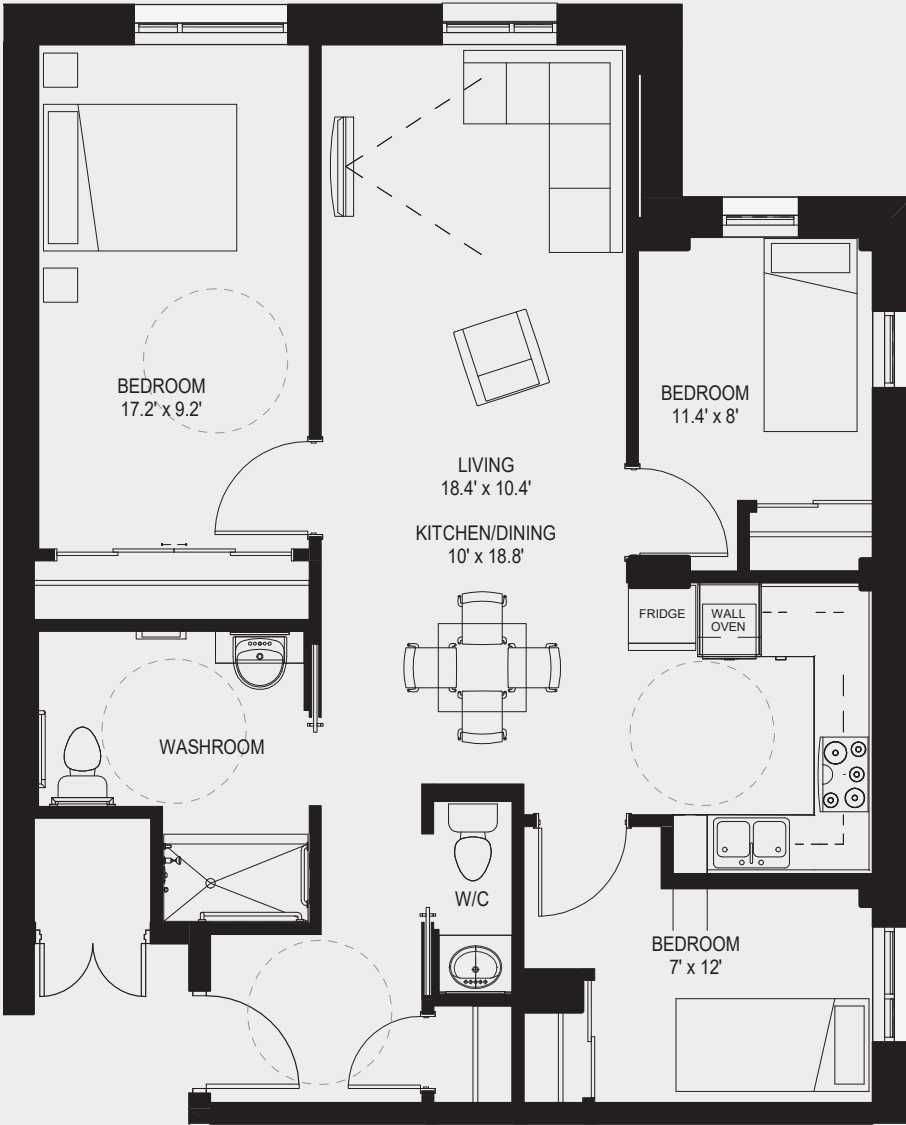
THIS UNIT IS LOCATED ON FLOORS  
1 AND 2

## 255 BARIELLE SNOW ST. (B)

THIS UNIT IS LOCATED ON FLOORS  
2 AND 3

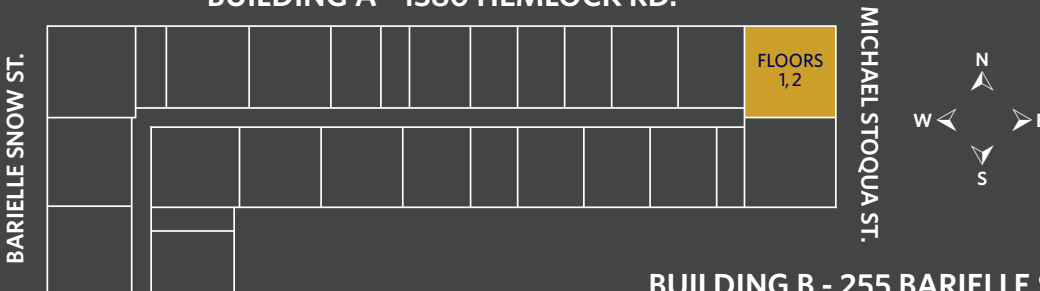
All floor plans, specifications, and drawings are provided as general artist concepts, for information purposes only, and are subject to change without notice. They are not intended to be relied on for dimensions, materials, finishes, layout, appliances, or furniture placement. Homes are leased unfurnished.

**WELCOME  
HOME**

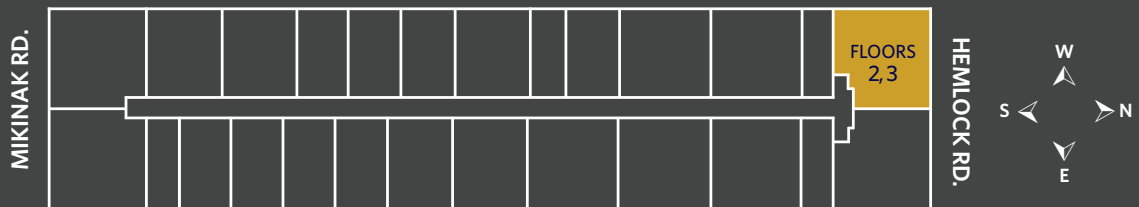


### BUILDING A - 1380 HEMLOCK RD.

LAST UPDATE: JUNE 2023



### BUILDING B - 255 BARIELLE SNOW ST.



MICHAEL STOQUA ST.